

C A M B R I D G E

SCALE WORKS, INC.

Model: SS660-R Stainless Steel Floor Scale Series

(Remote Junction Box)

Installation, Set-Up and Operation Manual



Cambridge Scale Works, Inc. • P.O. Box 670 • Honey Brook, PA. 19344

(800) 292-7640 • (610) 273-7040 • www.cambridgescale.com

Manual P/N: 5999-1061-00

Table of Contents

Section 1.0 General Introduction - - - - -	2
Section 2.0 Specifications - - - - -	2
Section 3.0 Installation - - - - -	3
Section 3.1 Ramp Installation - - - - -	4
Figure "A" Wiring Diagram - - - - -	5
Figure "B" Ramp Installation - - - - -	6
Section 4.0 Corner Off Set Adjustments - - - - -	7
Section 5.0 Troubleshooting Procedures - - - - -	7
Section 6.0 Warranty - - - - -	8
Section 7.0 Assistance - - - - -	8

Section 1.0

General Introduction

You have purchased the finest Stainless Steel Floor Scale on the market. It has been designed to give the customer many years of trouble free service. This scale was manufactured in the USA using the best steel, load cells, junction boxes and fabrication techniques to ensure a long life.

At some point your Cambridge Scale will require calibration and/or service. There are many qualified Cambridge service dealers/distributors across the United States to assist you. Thank you for purchasing a [product fully manufactured in the U.S.A.](#) by [Cambridge Scale Works, Inc.](#)

Section 2.0

Specifications

Model: SS660-R Specifications (Standard Sizes)					
Size	Capacity	Ship Weight	Size	Capacity	Ship Weight
24"x24"x3"	1,000 lb.	95 lb.	48"x60"x3"	5,000 lb. *	385 lb.
	2,500 lb.	95 lb.		10,000 lb. *	490 lb.
30"x30"x3"	1,000 lb.	125 lb.	48"x72"x3"	5,000 lb. *	465 lb.
	2,500 lb.	125 lb.		10,000 lb. *	585 lb.
36"x36"x3"	1,000 lb.	180 lb.	60"x60"x3"	5,000 lb. *	485 lb.
	2,500 lb.	180 lb.		10,000 lb. *	600 lb.
	5,000 lb.	180 lb.	60"x60"x4"	20,000 lb. *	855 lb.
48"x48"x3"	1,000 lb.	250 lb.	60"x84"x4"	10,000 lb. *	1,140 lb.
	2,500 lb.	250 lb.		20,000 lb. *	1,380 lb.
	5,000 lb. *	250 lb.	* NTEP APPROVED CUSTOM SIZES AVAILABLE, CONSULT FACTORY		
	10,000 lb *	375 lb.			

Section 3.0

Installation

1. Before cutting the metal bands, inspect the skid for possible damage. If there is damage, notify the freight carrier and sign the freight bill noting possible damage to the skid or scale.
2. After the metal shipping bands are cut and protective packaging is removed from the base, open the carton on the skid. It contains the remote junction box with sealtite conduit. **NOTE:** The sealtite conduit and junction box are attached to the scale. Remove the remote junction box from the carton and place it on top of the scale. Insert (2) 1/2-13 eye bolts into the holes in the scale deck (eye bolts are not included). **Note:** Larger size and capacity scales may require 3/4-10 threaded eye bolts, as the scale weight increases.
3. Hook chain or cable to the eye bolts to lift the base from the skid. **Note:** Check to be sure that the chain or cable has sufficient lifting capacity for the scale weight.
4. The scale should be lifted approximately 12" (1 foot) off the floor. This will allow ample clearance to move the scale away from the skid or remove the skid from underneath the scale.
5. Move the base to its location/install site.
6. Locate the stainless steel leveling feet installed in each of the four corners. Turn each leveling foot down approximately 2-3 turns.
7. Lower the stainless steel floor scale into the location where the scale is to be used. Check the four corners to make sure the leveling feet are set solid to the floor. Adjust the leveling feet as required to level the scale.
8. With a wrench, wind the jam nut on the (4) leveling feet up to jam the nut to the load cell. This will keep the leveling foot from shifting.
9. Remove the eye bolts that were used to lower the scale into position.
10. Install the remote junction box on a wall or stand positioned near the scale. Let the conduit lay gently on the floor without obstruction. **NOTE:** The conduit is attached to the live part of the scale and cannot be obstructed in any way.
11. Connect the base to the indicator by following the instructions in the indicator's service manual and scale base wiring diagram. **See Figure A.**

Section 3.1

Ramp Installation

1. Set the height of the base to approximately 3 1/4" by adjusting the leveling feet up or down.
2. Insert (2) 1/2-13 eye bolts into the holes in the ramp deck. Hook the chain or cable to the eye bolts to lift and position the ramp. Position the ramp alongside the base with it off set approximately 6" to 8". **See Figure B.**
3. Slide the ramp towards the base until the scale and ramp are approximately 1/4" to 1/2" apart.
4. Slide the ramp to the left until the horseshoes (ramp ears) hook around the leveling foot and the scale and ramp plates align.
5. Lastly, adjust the leveling feet so the scale and ramp are flush and all four corners are setting solid to the floor. Tighten the jam nuts on the leveling feet so they are snug against the load cell, but DO NOT OVERTIGHTEN. Although the scale cannot "walk" from the ramp with this unique design, it is strongly recommended that the ramp be lag bolted to the floor. (2) 1/2" lag down holes are provided, one on each side of the ramp.

Figure A.

Scale Base Wiring Diagram

Scale Position: Right Side Up

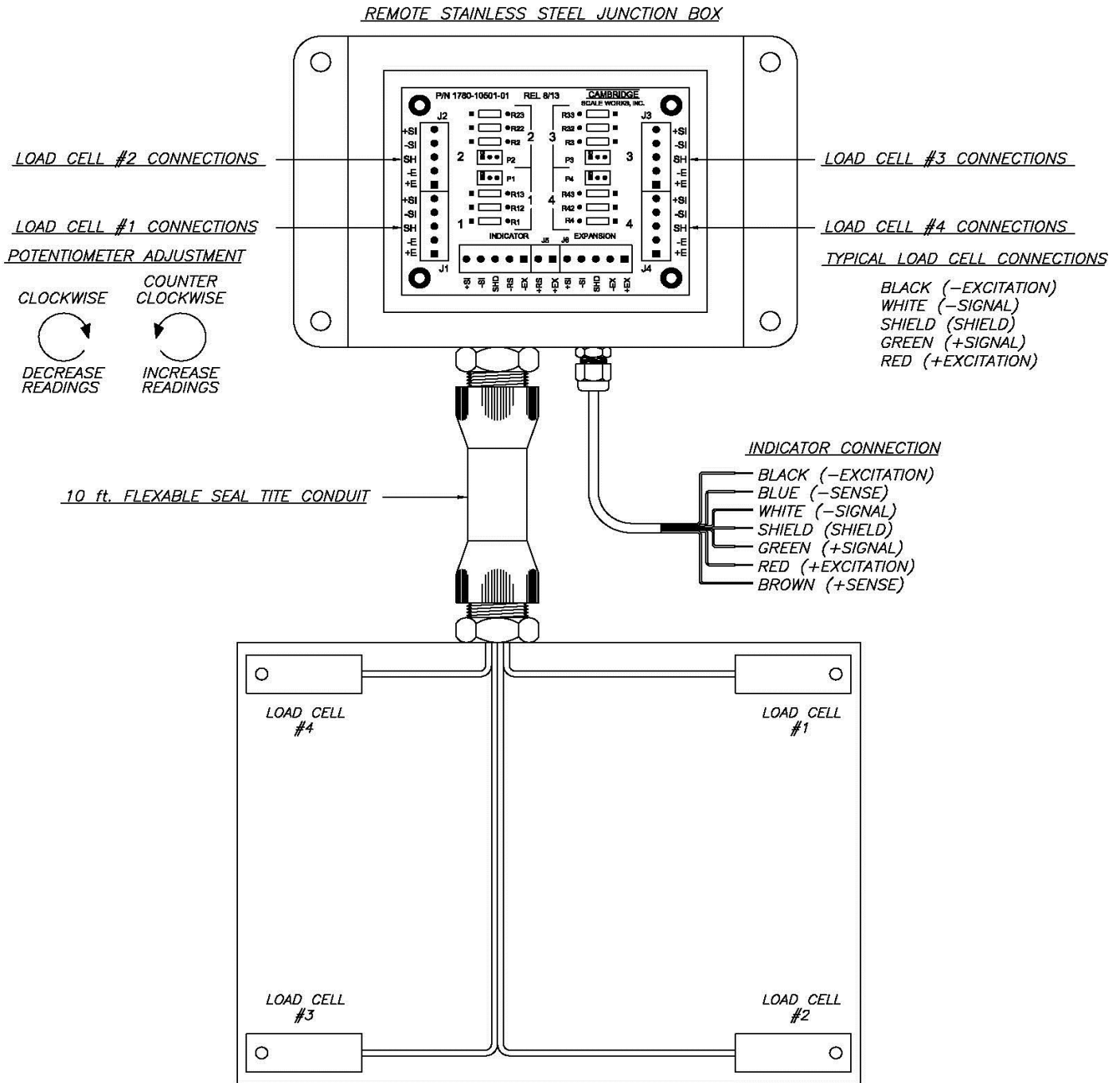
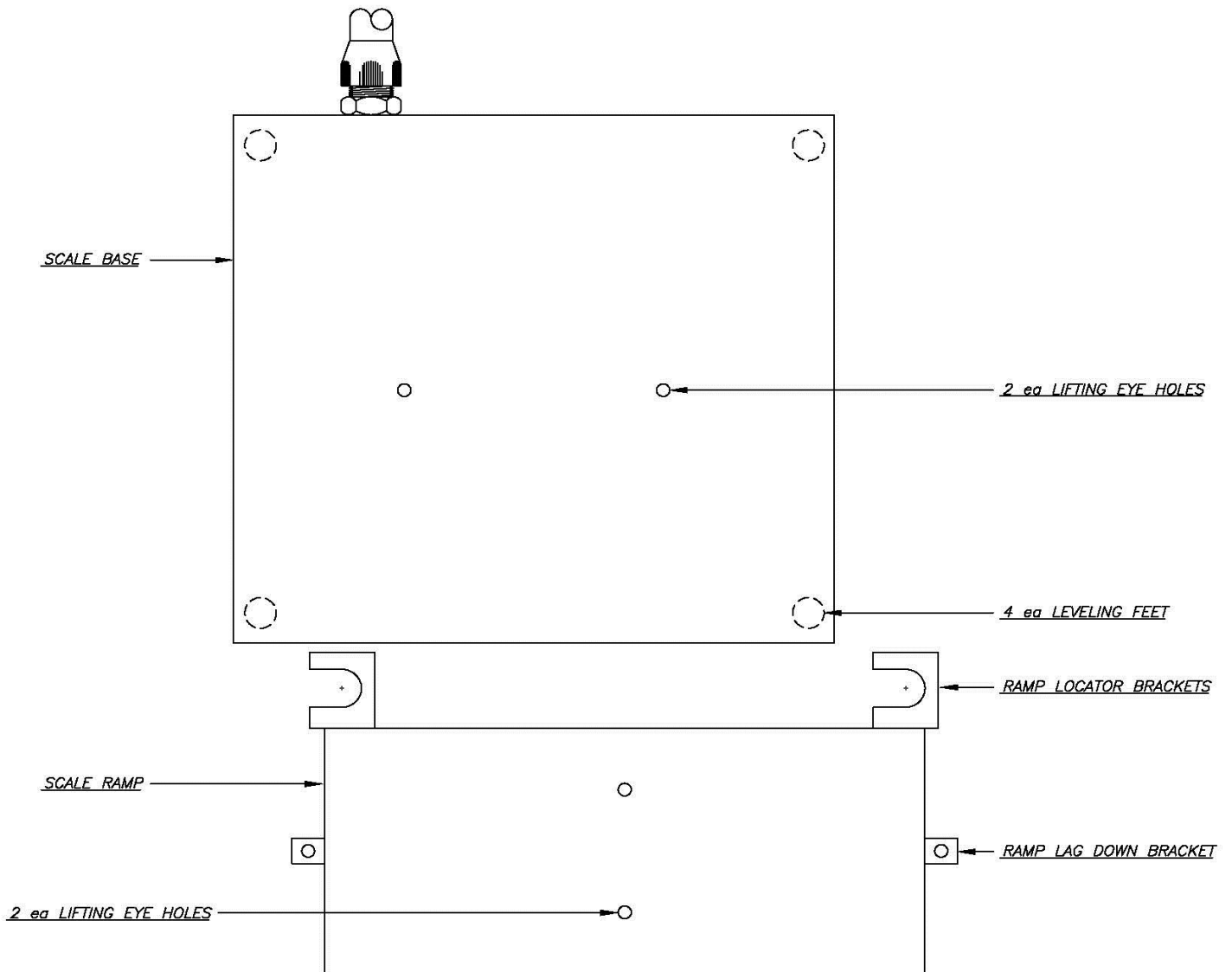


Figure B.

Ramp Installation Illustration



Section 4.0

Corner Offset Adjustments

1. Remove the (4) SS flat head socket cap screws holding the SS cover to the remote SS junction box.
2. Refer to the scale base load cell wiring diagram to locate the potentiometer for corner adjustment. **See Figure A.**
3. After locating the correct potentiometer for the corresponding corner to be adjusted, turn the potentiometer screw clockwise to decrease the corner reading or counterclockwise to increase the corner reading.
NOTE: Adjusting one corner may have an effect on the other corners. After adjustment is complete, all corners should be rechecked to ensure accuracy.
4. Replace the SS cover on the SS remote junction box and replace the (4) SS screws. **NOTE:** DO NOT OVERTIGHTEN
5. Recheck the scale with test weights & recalibrate if necessary.

Section 5.0

Troubleshooting Tips

1. Check for a pinched off or damaged indicator cable.
2. Check to see if the indicator cable is correctly wired to the indicator.
3. Check that the (4) leveling feet are snug to the floor and that the base is adjusted to the correct height.
4. Check for any obstructions between the leveling feet and the load cells or between the load cells and the base framework. Also, check for obstructions between the scale frame and the floor.
5. Check for loose hardware on the load cell mounts.
6. Check for loose or damaged wires at the junction board.

Section 6.0

Warranty Policy

CAMBRIDGE warrants the **SS660-R** to be free of defects in workmanship and/or materials for 12 months from the date of shipment. This warranty of workmanship and/or materials is valid, if in the opinion of **CAMBRIDGE** the equipment has not been mechanically, environmentally, or electrically abused.

This warranty is limited, at the option of **CAMBRIDGE**, to repair, replace or an appropriate credit adjustment, not to exceed the original equipment sale price paid to **CAMBRIDGE**. **CAMBRIDGE** assumes no liability in connection with the sales of its products beyond that stated above.

Warranty replacement parts and or repair services are performed at the factory in Cumberland, Maryland or by an authorized service group approved by **CAMBRIDGE**.

Warranty does not include travel expense if a factory technician is requested to perform repairs at a location other than the factory.

It is the user's responsibility to follow the proper set-up, calibration and operating procedures of the **SS660-R** as described in this manual. If the operator has difficulty using their **SS660-R** properly, please contact **CAMBRIDGE** at 1-301-724-4082. Any one of our Technicians will be happy to work with the user via telephone.

Thank You!

Section 7.0

Assistance

If at any time you require assistance with your **Model: SS660-R**

End User please contact your servicing scale dealer.

Authorized Cambridge Dealer/ Distributor please contact:

CAMBRIDGE SCALE WORKS, INC.

115 West Mary Street
Cumberland, MD 21502
Phone: (301) 724-4082
Fax: (301) 724-4964