



STANDARD CAPACITY:

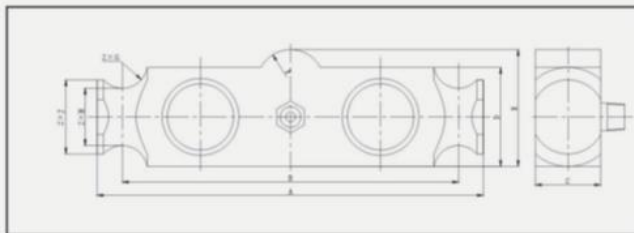
25,40,50,60,75,100,125klb
10,20,25,30,40,50t

WIRING:

RED +INPUT GREEN +OUTPUT
BLACK -INPUT WHITE -OUTPUT
CABLE: 60 FT, 4 COLOR SHIELD SS BRAIDED

• Specifications

Rated output	3.0 ± 0.003mV/V
Accuracy class	III L, M
Non-linearity	± 0.02%F.S
Hysteresis	± 0.02%F.S
Non-repeatability	± 0.02%F.S
Creep in 30 minutes	± 0.02%F.S
Temperature effect on span	15PPM/°C of Applied Load
Temperature effect on zero	20PPM/°C of Applied Load
Compensated temperature range	-10°C~40°C
Operating temperature range	-30°C~70°C
Zero balance	± 1%F.S
Input resistance	750 ± 10Ω
Output resistance	703 ± 2Ω
Safe overload	120%F.S
Ultimate overload	200%F.S
Excitation voltage	10~12V
Maximum excitation voltage	15VAC/DC
Insulation resistance	≥ 5000MΩ (50V DC)
Protection class	IP68
Material	Alloy Steel



(inch/mm)

CAPACITY	A	B	C	D	E	F	G	H	J
25K~75KSE	8.25	7.24	1.94	2.44	2.97	0.5	0.5	Φ1.63	Φ2
50k~75k	11.5	10	1.94	2.94	3.47	1	0.75	Φ1.7	Φ2.2
100k~125k	14.5	12.5	2.90	3.86	4.68	1.5	1	Φ2.44	Φ3.2
10t~20t	(209)	(183.9)	(49.3)	(62)	(75.4)	(12.7)	(12.7)	(41.4)	(50.8)
25t~35t	(292.1)	(254)	(49.3)	(74.7)	(88.1)	(25.4)	(19.1)	(43.2)	(55.9)
40t~50t	(368.3)	(317.5)	(73.7)	(98)	(118.9)	(38.1)	(25.4)	(62)	(81.3)

C A M B R I D G E

CN CELLS **LOAD CELLS**

<u>MODEL</u>	<u>DESCRIPTION</u>	<u>CAPACITY</u>	<u>LIST</u>
KL-40	DOUBLE-ENDED SHEAR BEAM LOAD CELL	50K	\$ 950.
KL-40	DOUBLE-ENDED SHEAR BEAM LOAD CELL	60K	\$ 950.
KL-40	DOUBLE-ENDED SHEAR BEAM LOAD CELL	75K	\$ 950.

INTERCHANGE WITH:

ARTECH MODEL: 80310
CELTRON MODEL: DLB
SENSORTONIC MODEL: 65040

F.O.B.: HONEY BROOK, PA

PRICES EFFECTIVE: 01/01/18

PRICES SUBJECT TO CHANGE WITHOUT NOTICE