



## STANDARD CAPACITY:

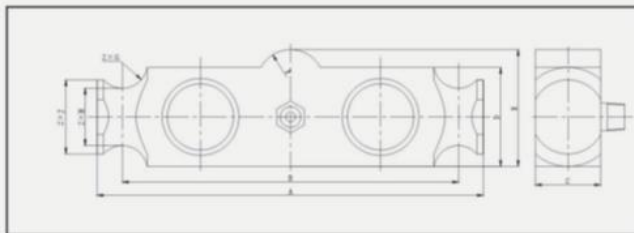
25,40,50,60,75,100,125klb  
10,20,25,30,40,50t

## WIRING:

RED +INPUT GREEN +OUTPUT  
BLACK -INPUT WHITE -OUTPUT  
CABLE: 60 FT, 4 COLOR SHIELD SS BRAIDED

## • Specifications

Rated output	$3.0 \pm 0.003 \text{mV/V}$
Accuracy class	III L, M
Non-linearity	$\pm 0.02\% \text{F.S}$
Hysteresis	$\pm 0.02\% \text{F.S}$
Non-repeatability	$\pm 0.02\% \text{F.S}$
Creep in 30 minutes	$\pm 0.02\% \text{F.S}$
Temperature effect on span	15PPM/°C of Applied Load
Temperature effect on zero	20PPM/°C of Applied Load
Compensated temperature range	-10°C~40°C
Operating temperature range	-30°C~70°C
Zero balance	$\pm 1\% \text{F.S}$
Input resistance	$750 \pm 10 \Omega$
Output resistance	$703 \pm 2 \Omega$
Safe overload	120%F.S
Ultimate overload	200%F.S
Excitation voltage	10~12V
Maximum excitation voltage	15VAC/DC
Insulation resistance	$\geq 5000 \text{M}\Omega$ (50V DC)
Protection class	IP68
Material	Alloy Steel



(inch/mm)

CAPACITY	A	B	C	D	E	F	G	H	J
25K~75KSE	8.25	7.24	1.94	2.44	2.97	0.5	0.5	Φ1.63	Φ2
50k~75k	11.5	10	1.94	2.94	3.47	1	0.75	Φ1.7	Φ2.2
100k~125k	14.5	12.5	2.90	3.86	4.68	1.5	1	Φ2.44	Φ3.2
10t~20t	(209)	(183.9)	(49.3)	(62)	(75.4)	(12.7)	(12.7)	(41.4)	(50.8)
25t~35t	(292.1)	(254)	(49.3)	(74.7)	(88.1)	(25.4)	(19.1)	(43.2)	(55.9)
40t~50t	(368.3)	(317.5)	(73.7)	(98)	(118.9)	(38.1)	(25.4)	(62)	(81.3)

# **C A M B R I D G E**

## **CN CELLS** **LOAD CELLS**

<b><u>MODEL</u></b>	<b><u>DESCRIPTION</u></b>	<b><u>CAPACITY</u></b>	<b><u>LIST</u></b>
KL-40	DOUBLE-ENDED SHEAR BEAM LOAD CELL	50K	\$ 930.
KL-40	DOUBLE-ENDED SHEAR BEAM LOAD CELL	60K	\$ 930.
KL-40	DOUBLE-ENDED SHEAR BEAM LOAD CELL	75K	\$ 930.

### **INTERCHANGE WITH:**

**ARTECH MODEL: 80310**  
**CELTRON MODEL: DLB**  
**SENSORTONIC MODEL: 65040**

**F.O.B.: HONEY BROOK, PA**

**PRICES EFFECTIVE: 01/01/17**

**PRICES SUBJECT TO CHANGE WITHOUT NOTICE**